

CUMULUS lounge seating

STEP & STEP MELANGE



L01 - Black



L02 - Turquoise melange



L03 - Turquoise



L04 - Blue melange



L05 - Blue



L06 - Light blue melange



L07 - Light blue



L08 - Green melange



L09 - Green



L10 - Orange melange



L11 - Orange



L12 - Light grey melange



L13 - Grey



L14 - Grey-blue melange



L15 - Beige



L16 - Dark yellow melange



L17 - Dark yellow



L18 - Red melange



L19 - Red



L20 - Dark grey melange



INFORMATION

Composition

100% Trevira CS®

Flame Retardant Polyester

Weight

470 g/m²

Abrasion resistance

100.000 Martindale cycles

BS EN 1021 – 1 (Cigarette)

BS EN 1021 – 2 (Match)

BS 5852 Part 1 0,1 Cigarette & match

Crib 5 (BS 5852 part II)

BS 7176 Medium Hazard

UNI 9175 & UNI 9175/FA1 Classe 1 IM

IMO MSC 307(88) Annex 1 part 8 MED

Certificate IMO

DIN 4102 B1

NFP 92-503/504/505 M1

ÖNORM B 3825-B1-3800-Q1 UK

FAR/JAR 25.853 (a) (i) (ii)

AM 18 – NF D 60-013 – (only for fabric)

CA TB 117-2013

DIN EN 13501-1 B-s1, d0

Light fastness

5-7 (EN ISO 105 – B02)

Fastness to rubbing

wet: 4-5; dry: 4-5 (ISO 105 – X12)



VELITO



GP1 - Light mint



GP3 - Yellow



GP5 - Dark pink melange



GT0 - Green melange



GT1 - Light blue



GT2 - Grey



GT3 - Light green melange



GT4 - Cappuccino



GT5 - Light red



GT6 - Mint



GT7 - Claret melange



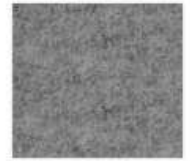
GT8 - Light grey melange



GT9 - Light blue melange



GU1 - Black



GU2 - Grey melange



GU3 - Mustard



GU4 - Beige



GU5 - Red melange



GU6 - Blue



GU8 - Brown melange



GU9 - Dark grey

INFORMATION

Composition

88% Wool, 12% Polyamide

Weight

400 g/ m²

Abrasion resistance

120.000 Martindale cycles

Flammability

BS EN 1021 – 1 (cigarette)

BS EN 1021 – 2 (match)

Light fastness

4 (EN ISO 105 – B02)

Fastness to rubbing

wet: 5; dry: 5 (ISO 105 – X12)



SYNERGY



S45 - Yellow melange



S46 - Light green melange



S53 - Green melange



S50 - Dark green melange



S17 - Black melange



S55 - Light mint colour



S56 - Mint colour melange



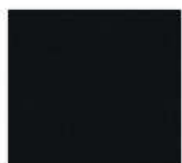
S59 - Dark teal melange



S62 - Midnight blue melange



S69 - Navy blue



S27 - Black



S84 - Red



S85 - Red melange



S68 - Royal blue melange



S63 - Blue



S16 - Grey melange



S08 - Light grey melange

INFORMATION

Composition

95% Virgin Wool, 5% Polyamide

Weight

400 g/m²

Abrasion resistance

100.000 Martindale cycles

Flammability

BS EN 1021 – 1 (cigarette)

BS EN 1021 – 2 (match)

BS 7176 Low Hazard

UNI 9175 Classe 1 IM

Light fastness

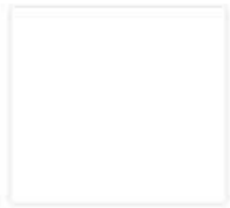
5 (EN ISO 105 – B02)

Fastness to rubbing

wet: 4; dry: 4 (ISO 105 – X12)



Metal



E - White



T1 - Dark grey

INFORMATION

- Perfectly stands the test of time.
- The uniformly matt surface thanks to two Satin Ice surfaces.
- Scratch and fingerprint resistant.
- Certified to ISO 14001 (Environment). 100% recyclable.