

MURO

Technical information



Quality standard

Cable management solutions ETL Listed to UL183 (Byrne)

Other documents available for this product

Ordering guidelines for MURO power beam
 NARBUTAS product care guide

10 year Warranty

See Warranty statement



Technical information

Types

- Powered / non-powered beam with legs (1)
- Screens (2)

1



2



Powered beam

- Beam made of 0,04" thickness metal sheet, bent to 5,16"x3,07" C-shape profile;
- Length varies from 39,15" to 79,61", 7,87" increments;
- Two 0,16" thickness metal sheet U-shape side holders for leg connection;
- Powder-coated metal;
- Four black NEMA 5-15 20amp-rated receptacles per user/side (extendable up to six) (powered version only);
- Cut-outs for data (RJ45) and additional receptacles covered with plastic colour-matched covers (powered version only);
- Cut-outs for cable routing and duct connection in beam bottom and side holders for various situations.

T-shape leg for the straight connection

- Start, end or extension application for straight combination;
- Leg made of 3,15"x1,57"x0,08", H=20,61" metal tube;
- Foot made of 1,97"x0,59"x0,06" L=22,44" metal tube;
- Both the legs and feet are capped with metal plates welded in place;
- Powder-coated metal;
- Plastic levelling feet (+0,39").

T-shape leg for the straight connection at the end

- Ending application for straight combination;
- Leg made of 3,15"x1,57"x0,08", H=26,61" metal tube;
- Foot made of 1,97"x0,6"x0,06", L=14,6" metal tube;
- Both the legs and feet are capped with metal plates welded in place;
- Powder-coated metal;
- Plastic levelling feet (+0,39").

I-shape leg for the angle connection

- Extension application to branch-out combination (4 connection ways);
- Leg made of 3,15"x3,15"x0,08" metal tube;
- Both the legs and feet are capped with metal plates welded in place;
- Powder-coated metal;
- Plastic levelling feet (+0,39").

Metal cover

- 3,15"x2,56"x0,08" metal plate,
- Welded studs for fixing to the leg;
- Powder-coated metal.

Power block (single-sided or double-sided)

- 8-wire system, rated for 20 amps;
- 3+1 keying: 4 circuits with 4 line conductors, 2 neutrals and 2 grounds;
- 2 duplex outlets (4 receptacles) per side, NEMA 5-15 standard, black color;
- Number 1 and Number 2 circuits on one side (single-sided power beams) and Number 3 and Number 4 (isolated) on the other side (double-sided power beams only).

Acoustic screens (1)

Screen composition (A)

- Made from 0,63" chipboard;
- Covered with 0,39" acoustic foam;
- Upholstered with fabric;
- Fabric can be removed for recycling purposes.

Metal profile

- Metal profile made of 0,08" thickness metal sheet, bent to 1,14",0,2"x0,98" U-shape profile;
- Length varies from 37,44" to 76,81", 7,87" increments, depending on screen length;
- Pins on each end to lock into side holders, additionally attached with bolts to the beam;
- Powder-coated metal.

Metal side holders

- L-shape holder composed of 0,08"- and 0,16" thickness metal parts;
- Dimensions: 2,76"x1,57", H=13,39", U shape profile 1,16"x0,98";
- Attached with bolts to the beam;
- Powder-coated metal.

Double-sided acoustic screens (2)

Screen composition (B)

- Frame made of 3,15"x0,71" and 3,94"x0,71" MDF strips;
- Central layer made of 0,79" expanded polystyrene EPS 70;
- Second layer is made of HR3030 0,39" foam from both sides;
- Third layer is made of VB2240 0,12" foam from both sides;
- Dowel pins combine two panels;
- Upholstered with 1-color fabric or 2-color fabric combination.

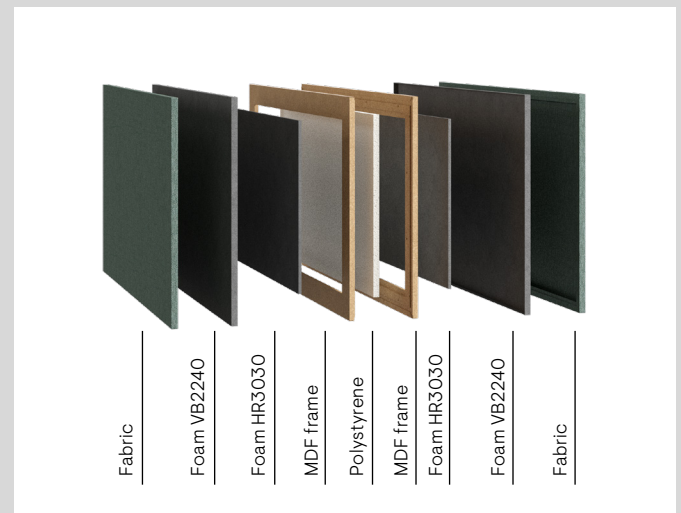
Screen holders

- Fittings are assembled with the screen in the factory;
- 2 holders for screens up to 5,12", 3 holders for 63" and wider screens;
- Attached with bolts to the beam;
- Powder-coated metal.

A



B



PET felt screen (3)

Screen composition

- Two separate PET fiber board pieces (0,35") glued into one solid screen (0,71"), R50 rounded corners;
- Chamfered side edges for easier side holder installation.

Metal profile

- Metal profile made of 0,08" thickness metal sheet, bent to 8,46"x0,98" U-shape profile;
- Length varies from 37,44" to 76,81", 7,87" increments, depending on screen length;
- Pins on each end to lock into side holders, additionally attached with bolts to the beam;
- Powder-coated metal.

Metal side holders

- L-shape holder composed of 0,08"- and 0,16"- thickness metal parts;
- Dimensions: 2,76"x1,57", H=13,94", U-shape profile 8,46"x0,98";
- Attached with bolts to the beam;
- Adhesive colour-matched covers for a cleaner look;
- Powder-coated metal.

1



2



3



Electrical components

Multi-circuit infeed cable (1)

- Metal oval-shape flexible conduit, L=72”;
- Female connector for connecting to power beams or distributor;
- Free 8-wire end for connecting to building electrical panel/other connection points.

Special Purpose Multi-Circuit infeed cable for New York (2)

- Set of two conduits and intermediate box as per NYC requirements;
- Metal oval shape flexible Conduits, L=72”;
- Female connector for connecting to power block or distributor;
- Free 8-wire end in intermediate box.

Female/Female Metal Flex Cable (3)

- Cable for interconnecting power beams or extending power infeed (with distributor block (4) only).

Connector for connecting/ distributing cables (4)

- Type 1 in/3 out

Additional duplex block (5)

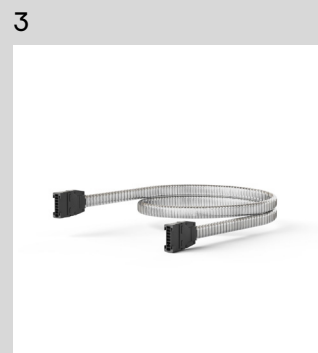
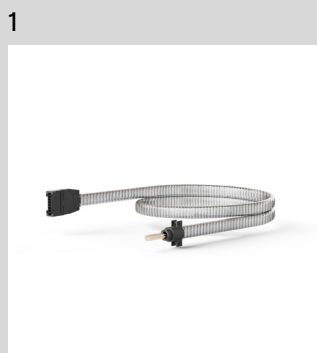
- Set of power block and jumper cable;
- Number 1 circuit (single-sided) and Number 3 circuit (double-sided-only) receptacles.

RJ45 data jack (6)

- Connection point for data cables, RJ45 cat.6, snap-in installation in power beam sides;
- Only keystone, cables are not included;
- Black plastic.

Set of 2 duplex outlets (7)

- Set of two duplex outlets (4 receptacles) for upgrading single-sided power beams to double-sided;
- Number 3 and Number 4 (isolated) circuit outlets, black color.



Accessories

Vertical metal cable tray (1)

- Attached to power beam leg with hooks, tool-free installation;
- U-shape tray made from 0,04" sheet metal, dimensions: 2,52"x12,8", H=156,5";
- Inside cross-section dimensions for cable routing: 2,44"x0,87"
- Powder-coated metal

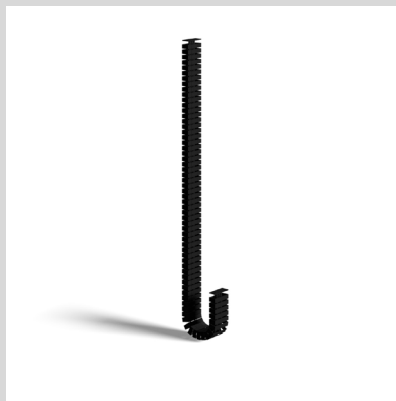
Cable duct (2)

Cable wrap (3)

1



2



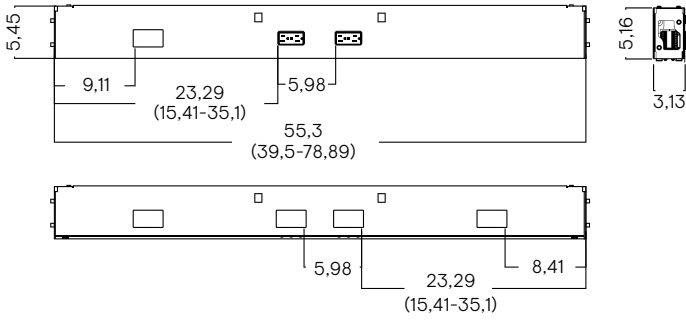
3



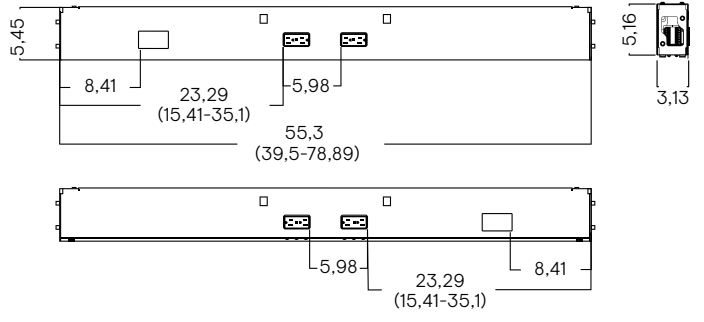
Range

Powered/non-powered beam with legs

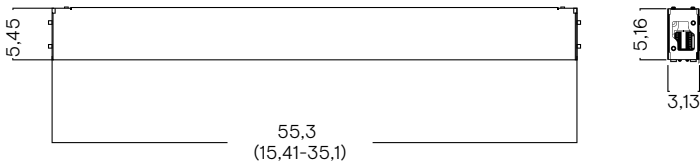
Single-sided powered beam



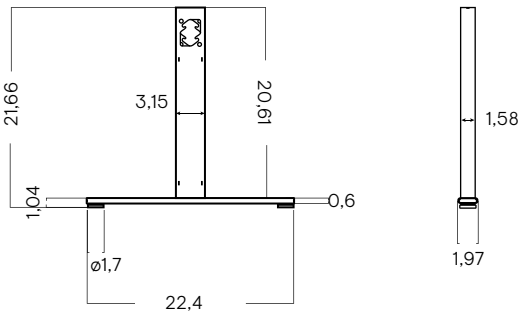
Double-sided powered beam



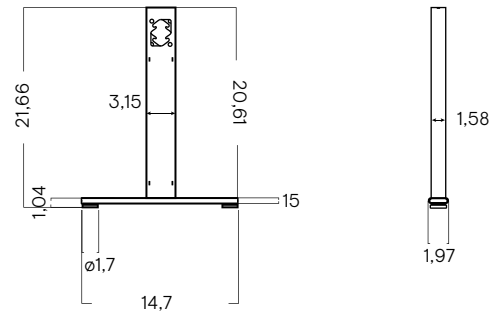
Non-powered beam



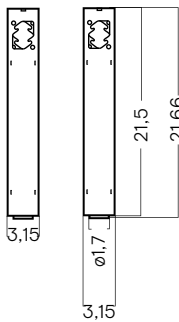
T-form leg for the straight connection



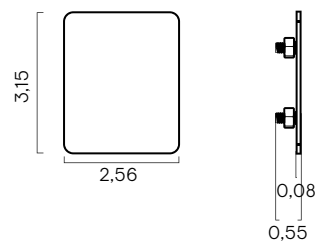
T-form leg for the straight connection at the end



I-form leg for the angle connection

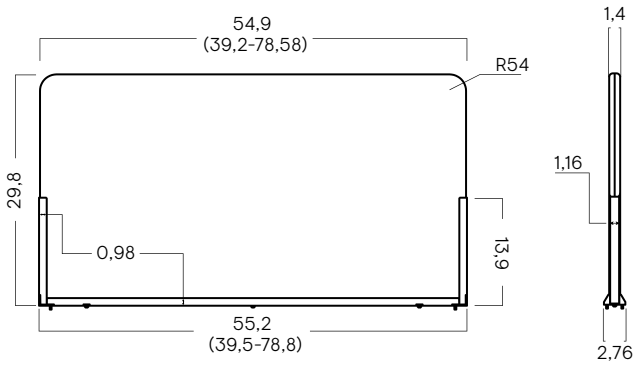


Metal cover

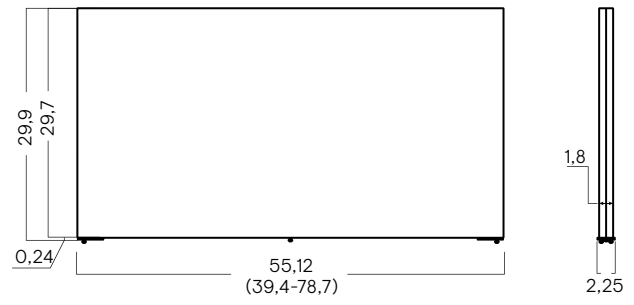


Screens

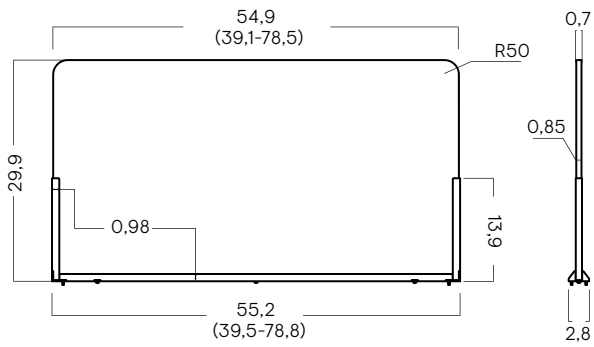
Acoustic screen



Double-sided acoustic screen

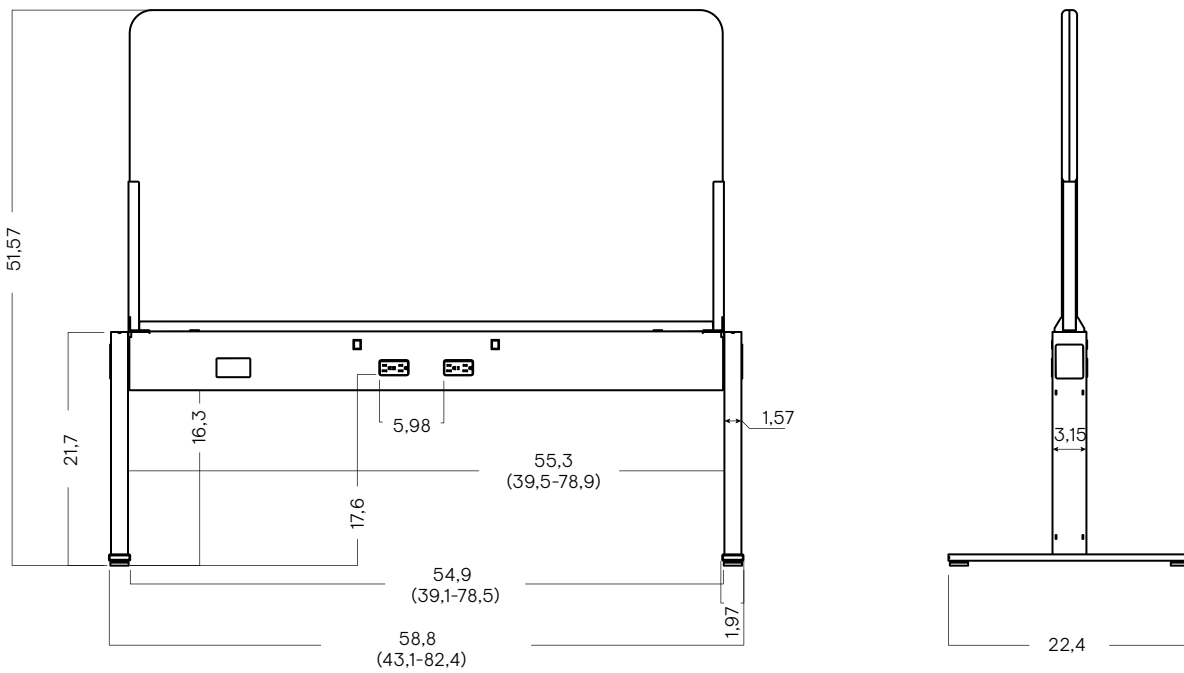


PET felt screen



Power beam with screen

Double sided powered beam with T-form legs

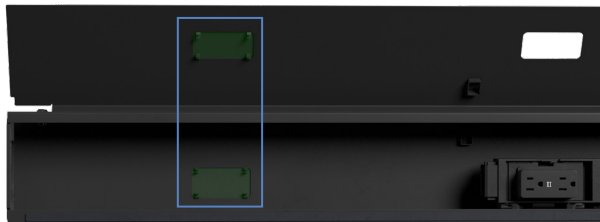


Additional information

- Powered or non-powered beams can be accessed from one side for convenient cable management.



- All powered beams (single or double-sided) have cut-outs for additional duplex block with 2 power outlets. Additional duplex blocks should be ordered separately.



- Single-sided powered beam has extra cut-outs on the other side for the possibility of making it double-sided. Cut-outs are covered with colour-matched plastic covers. Set of 2 duplex outlets should be ordered separately (ZUS119).



- The required combination is formed by connecting a powered or non-powered beam with a T- or I-shape leg and metal cover. Please check the ordering guidelines.

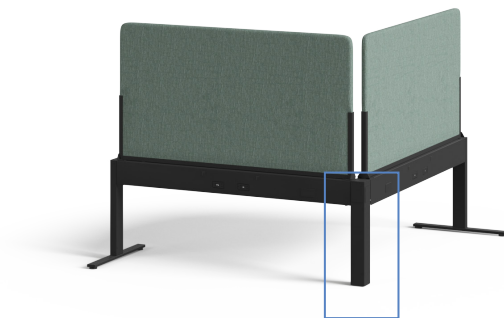
- T-shape leg (D=22,44") suitable for straight connection.



- The T-shape leg (D=14,74") is made shorter on purpose to be used on the end of the combination where the leg is placed perpendicularly to the desk leg.



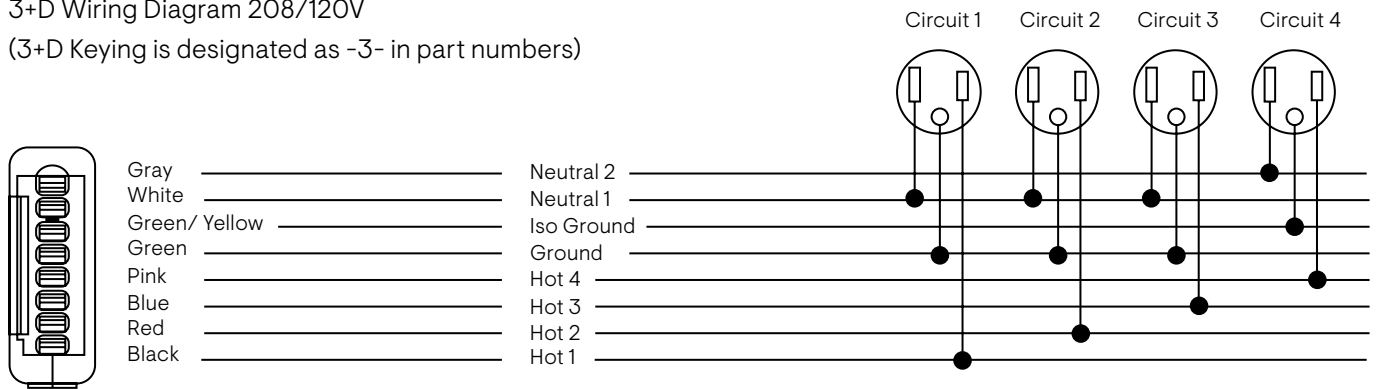
- I-shape leg suitable only for angle connection.



- The powered beam for a 39,37” desktop must be connected with another powered beam and cannot stand separately.
- All MURO screen designs match other screens in the NARBUTAS range. Acoustic screens match DESK760, double-sided acoustic screens match MODUS screens, and PET felt screens with ROUND PET screens.
- System is rated for 20 Amps, allowing the use of 4 circuits with 4 line conductors, 2 neutrals and 2 grounds. Under NEC requirements, up to 13 duplex receptacles may be used per circuit, with a total of 52 available receptacles if all circuits are used, per single power entry unless stated otherwise by local requirements. The line conductors are 12 AWG and share a 12 AWG ground and a 10 AWG neutral. The fourth circuit is isolated and dedicated and is serviced by its own line conductor, neutral and isolated ground. 8-pin plug wire color coding is as follows:

3+D Wiring Diagram 208/120V

(3+D Keying is designated as -3- in part numbers)



- The maximum number of power beams connected in one combination depends on selected components. Consult with local electrical specialist for applying requirements.
- Please find more information about finish care in the NARBUTAS product care guide.